

When did they rule?

Elizabethan
period

Victorian
period

Elizabeth II
Present day monarch

1500

1800

2000

Elizabeth I
1558 - 1603

Elizabeth I
reigned from
1558 to 1603.

**She was Queen
for 45 years**



Queen Victoria
1837 - 1901

Victoria reigned
from 1837 to
1901. **She was
Queen for 64
years.**



Fact Finders

What are the key facts?

Move the information on the cards onto either Elizabeth I or Queen Victoria on your activity sheet.



Young Elizabeth

The Young Queens

Both Elizabeth and Victoria became Queen at a young age.

Elizabeth was **25** when she became Queen.

Victoria was only **18**.



Young Victoria

Fact Finders



Elizabeth I Family Elizabeth's mother was Anne Boleyn and her father was Henry VIII. Elizabeth never married.

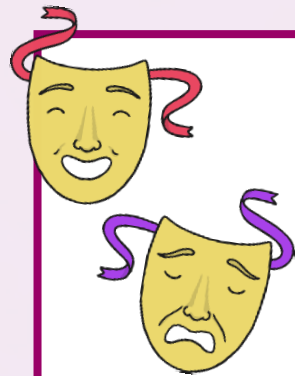
Queen Victoria Family Background

- Victoria married Albert and they had nine children together.





Fact Finders



The rule of Elizabeth I (1558 – 1603) is often called the ‘**Golden Age**’.



The Spanish Armada

In 1558, Spain sent 130 ships called the **Spanish Armada** to invade England.

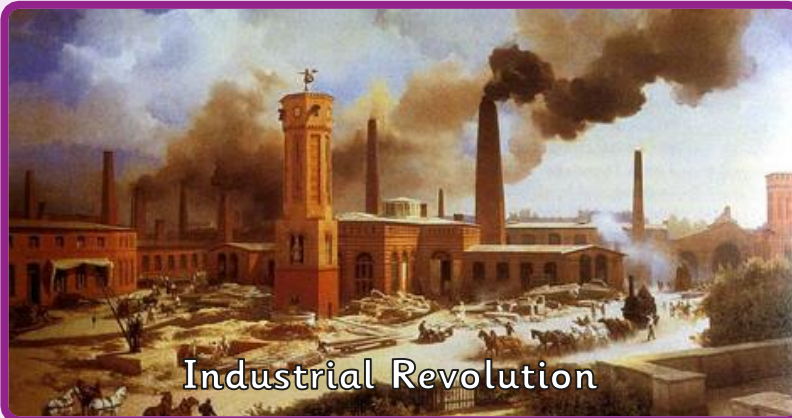


Fact Finders

Times of Great Change

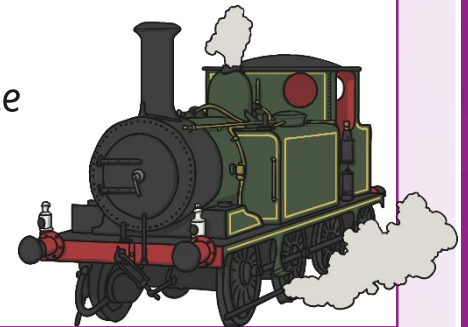
The rule of Queen Victoria (1837 – 1901) is called the Victorian era, a time when there was great change in people's lives.

During this time, there was the Industrial Revolution.



Industrial Revolution

The car and the steam train were invented during the reign of Queen Victoria.



Similar and Different?



Similarities between Elizabeth I and Queen Victoria

- Both became Queen at a young age.

Differences between Elizabeth I and Queen Victoria

- Elizabeth never married or had any children while Victoria married and had a large family.

