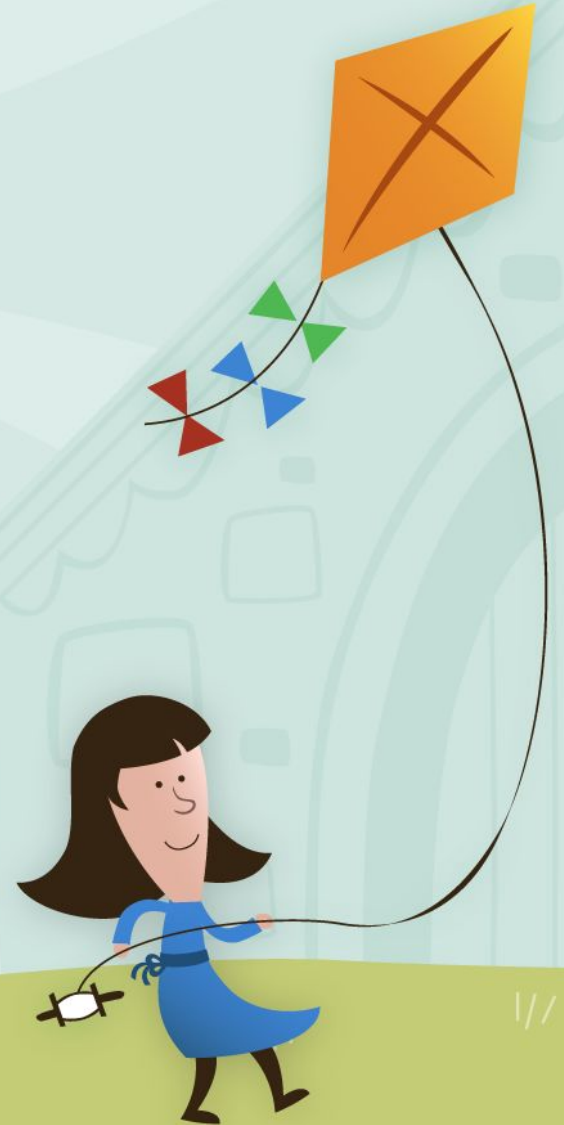




What do you
think **Opal** is?



Opal stands for... Outdoor Play and Learning



Opal is used in schools to improve the quality of playtime for YOU!





Mrs Ford
Deputy Head



Mrs Rosso
Assistant Head



Mrs Boyle
Curriculum Lead for Play



Mrs Matthews
Play Coordinator



Mrs Webb
Play Coordinator



Our **Opal**
Team at St
Mark's





Julie Mountain
Opal Mentor



Mrs Barbour
Site Manager



Mr Calver
Forest School Lead



Primrose Gibson
Governor



Our **Opal**
Team at St
Mark's



Your views about Playtimes



We want the same rules from all adults, so it's not confusing.

We'd like to play in all the playground areas more often.

We want to go on the field and banks, even when it's a bit wet.

We need more places to sit and chill outside.

We'd love more stuff to build, create and make dens.

We want to play our favourite games without them being stopped.

We'd like adults to notice when we need help or feel hurt.

We want playtimes to feel kind, calm and fun for everyone.

We love football, ping pong, trim trail and playing with friends.

We dream of slides, swings, animals, dens and exciting new play things!



What could our play times look like?

Let's look at another school that uses **Opal**.



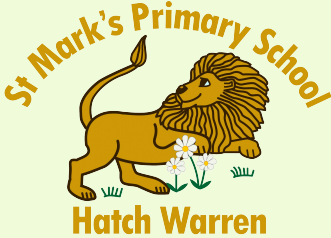
St Mark's Primary School
Hatch Warren

What did you notice about their playtimes compared to ours?





What next for us?



Starting from today we are going to make some changes to start our **Opal** journey, although it will take a lot longer to get it like the video we saw.

First change for some areas!

LUNCHTIME ROTA AUTUMN 2024 VERSION 3

	Year R	Year 1	Year 2	Year 3	Year 4	Year 5	Year 6
Lunch hall time	11.45	12.00	12.15	12.30	12.40	12.50	12.55
Lunchtime	11.45-12.40pm	12-12.55pm	12.15-1.10pm	12.30-1.25pm	12.45-1.20pm	12.25-1.20pm	12.25-1.20pm

Trim Trail: Lunchtime 2 adults on the Trim

	Mon				Thur				Fri		
	12.10-12.30	12.30-12.50	12.50-1.15	12.10-12.30	12.50-1.15	12.10-12.30	12.30-12.50	12.50-1.15	12.25-12.45	12.45-1pm	
Week A (wk 2/9/24, 23/9/24, 14/10/24, 11/11/24, 2/12/24)	1TM	6F	4PR	1M	3SG	1BM	2B	3P	5E (12.25-12.45)	2G (12.45-1pm)	
Week B (wk 9/9/24, 30/9/23, 21/10/24, 18/11/24, 9/12/24)	Penguins	2G	3P	1M	3SG	1BM	6C	4C	5DS (12.25-12.45)	2B (12.45-1pm)	
Week C (wk 16/9/24, 7/10/24, 4/11/24, 25/11/24, 16/12/24)	1M	6C	3SG	1M	4SB	Penguins	Puffins	5DS	4C	5P (12.25-12.45)	2CL (12.45-1pm)





With the Timetables gone ... What does that mean?

Anyone can go on the trim trail

Anyone can go in the farm

BUT

If it looks too busy Find another great activity!

This is where some of our new Opal play comes in.

We will still have a timetable for football to start with, but you get to go more often. We have made no changes to table tennis.



From this week, everyone will be out at lunchtime at the same time 12-1pm

This means we will need to use all of our learning behaviours,
especially TEAMWORK!

Lunch Times	
Year R	11.50
Year 1	12.00
Year 2	12.10
Year 3	12.20
Year 4	12.30
Year 5/6	12.40

Lunch times in the
hall might be different.

For Years 2-6 a sign
will be held up when it
is your lunch time.





Colouring small hall

St Mark's CE
Primary School



Small world play

Digging

Colouring

Farm

FARM

Large
Construction

Chalk on patios –
NOT WALLS

Table Tennis

Football

Netball

Teddies

Running

Books

Trim Trail

Cars and
tubes

Sports Equipment

Dressing up

Fairy doors

Dry mud
kitchen



Our
changes
from
today!

What will you play
with?



How can you help Opal work?

Be responsible for positive play
Look after our resources and different
play areas
Help Tidy up, everyone is responsible
for tidying up
Embrace Opal play and give us ideas
of what you would like





Large Construction Area

- 2 tyres or 1 crate high
- Be aware of others around you as you move equipment
- If you show you are responsible and safe, we might make this higher.
- No rolling of large tyres down steep banks.
- All equipment needs to be put back.



Cars, tyres and tubes



- No lifting these tyres
- No putting hands down the tubes



We will

Be responsible for positive play
Look after our resources and different
play areas
Help Tidy up, everyone is responsible
for tidying up
Embrace Opal play and give us ideas
of what you would like



Dry Mud Kitchen

- Enjoy our new mud kitchen
- There are pots and pans
- Have great fun trying out your new recipes!
- ✗ Remember not to really eat them!
- All equipment needs to be put back
- ✗ Remember not to make yourself muddy on purpose
- Enjoy digging





Dressing up

- There are lots of new hats and costumes.
- You can take these anywhere but they must be returned at the end of lunch and playtime.



We will

Be responsible for positive play
Look after our resources and different
play areas
Help Tidy up, everyone is responsible
for tidying up
Embrace Opal play and give us ideas
of what you would like





Fairy Doors

- Create your own Fairy gardens. We will put out a few fairy doors each day. **WORK TOGETHER!**
- Use pebbles, leaves and feathers to make a home for your fairy! Fairy doors must be left in school and can be reused.



Sporting fun!

- On the top field, there will be lots of sporting equipment for you to play with.



There will be NO football here!

- Please take care with bats and equipment- they are not to be used to hit or hurt others with.
- Equipment must be returned to the shed.



We will

Be responsible for positive play
Look after our resources and different
play areas
Help Tidy up, everyone is responsible
for tidying up
Embrace Opal play and give us ideas
of what you would like





Teddy Bear's Picnic

- Love teddy bears? Then head to the Gazebo, where you'll find teddies and picnic blankets
- Teddies must be returned to the boxes.



Netball

- In addition to the table tennis, there will be netballs available to practice your netball shooting skills.
- Balls must be returned to the box.



We will

Be responsible for positive play
Look after our resources and different
play areas
Help Tidy up, everyone is responsible
for tidying up
Embrace Opal play and give us ideas
of what you would like





Get Digging

- Love digging? Then have fun in the two flower beds with the slabs.
 - You can sit on some of the kneeling cushions in the sheds.
- ✗ Please don't throw mud and take care with your tools!





Small World Play

- As well as using the playground markings and games, we will also have small world play like lego/duplo on the playground and patios outside KS1.
- Use the tough spots and blankets to play on. You can use some kneeling cushions too.



Remember to tidy it all away at the end of play

Ball pit-Football- More frequent visits

Play times::

Mon	Tues	Wed	Thurs	Fri
Y1/2	Y3	Y4	Y5	Y6

Lunch Times:

12-12.20pm	Y5/6
12.20-12.40 pm	Y1/2
12.40-1pm	Y3/4



There will be bibs. You must have a bib to play.
You will play for 10 minutes, then leave.
You will show respect or you will be given a:
Yellow card- warning
Red card- asked to leave

If you're looking for a little quiet or calm

- Head to the small hall for colouring activities
 - Outside colouring on large cardboard boxes
 - Inside for some quieter colouring

Or

- Try some chalking on the patios outside the KS2 classrooms.
 - Chalks should only be used on the patios, NOT ✖ the walls.

Or

- Head outside year 3/4 to read a Beano or two!



We will

Be responsible for positive play
Look after our resources and different
play areas
Help Tidy up, everyone is responsible
for tidying up
Embrace Opal play and give us ideas
of what you would like



Other important rules

- Only adults can go into the sheds.
 - ✗ No children in the sheds.
 - Sheds will be locked by adults.
 - You can politely ask an adult for something from a shed.
-
- All lids will be locked into the sheds.
- ✗ No climbing in the boxes.



We want you to have lots of fun.....

BUT

You must follow the rules:

If it looks too busy find another great activity!

Respect what adults say

Look after the equipment & each other

Tidy up at the end of playtimes



We will begin OPAL today at lunchtime.

From Tuesday, it will happen at break time and lunchtime everyday.

Tidy up time

We will blow the whistle:

- once two minutes before tidy up time
- twice for tidy up time and show the letter T with our arms
- We then have 5 minutes to tidy up before in-time



WHO HELPS TIDY?