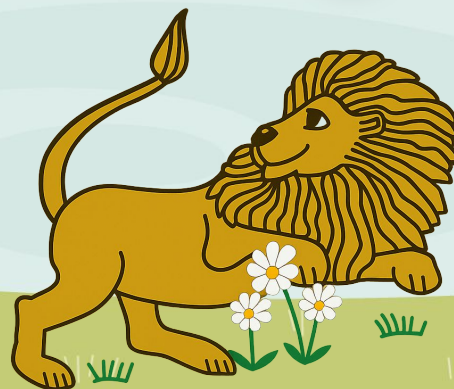
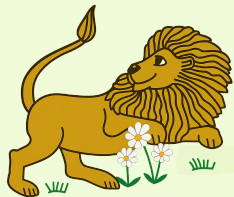


Play Assembly 2

Monday 14th July 2025





PLAY CHARTER

We have the responsibility to make sure everyone enjoys playtimes so we will use our Learning Behaviours



Everyone has the choice of what to play
We are creative with the objects we have

We share equipment fairly and kindly
We help people if they need us
We allow others to join games



We treat others how we like to be treated
We are kind and listen to each other

We take care of the equipment
We keep everyone safe by spotting things that might be dangerous



We remember 'no way through isn't true' and solve problems.

HAVE FUN!



Opal Agenda

Celebrate!
Inform
Negotiate
Innovate





INFORM



Creativity Challenge:

- Using the crates/construction equipment- who can make the most creative structure!

There will be a prize!



Sledging boxes or building boxes:

- 1 person at a time
- Only on the banks on the field near dressing up.

Fairy doors are back!:

- We will put out 5 a day to use
- Remember to leave them for others to enjoy.



Kindness Team

- In the Small Hall
- With Added puzzles

Safety: Tyres & metal

- Don't touch or use when it is hot



Climbing Tree (Year 6 only)



Tree Climbing

- *Just for Year 6*
- Trees have signs: I am a climbing tree.
- 1 person at a time.
- No one underneath and check for stones/sharp objects.
- Feet no higher than the tape!
- 3 points of contact



Hanging Tree (Everyone)



Tree Swinging

- *Any children*
- Trees have signs: I am a swinging tree.
- 1 person at a time
- Swing on the part that is closest to the trunk.
- The width of the branch should be thicker than your arm.
- No climbing the tree.
- Pull ups are allowed but you must not use your feet to climb up the tree.
- You **MUST NOT** lift anyone else up the the branch!



Note: Other trees have signs to say you must **not** use these





- It is your responsibility to report broken objects
- There are no games that are allowed that involve hitting each other or pushing each other down the bank.
- Do not hit each other with equipment i.e. cushions.
- Take care not to throw equipment into the hedges where it gets lost.
- Mess! There is starting to be more litter around. If you see it... Sort it!



Negotiate



Do Not Climb
Me



Do we all want to be able to climb trees?

If yes, what needs to happen this week to ensure we can start that in September?

How long should you be in the tree if you are climbing or swinging?



Tidy up time!



1 whistle (only at lunch time) 2 min warning
2 whistles & T-sign- tidy up time. We have 5 minutes to clear away and tidy up together. (Only 2 mins at playtime)

EVERYBODY is responsible for tidying away all equipment whether you played with it or not.

3 whistles & arm up- In time.



Dressing up play items returned to the shed.

All large loose parts back to their designated area.



Netballs and footballs put back in tubs.

Scooters and bikes back to the shed.

Small world and lego back in boxes and sheds.



Have a good playtime and remember we will

Be responsible for positive play

Look after our resources and different play areas

Help Tidy up, everyone is responsible for tidying up

Embrace Opal play and give us ideas of what you would like

